

Mailing Address: Warren County ARTS, PO Box 420, Washington, NJ 07882
Meeting Address: Oxford Municipal Bldg., 11 Green St., Oxford, NJ.

The Artist's Palette

Volume 28, Issue 6

June 2024



Inside this issue:

From the President's Pen 1

Program & Exhibit Schedule—2024 2

Treasurer's Report 2

@Warren County ARTS 2

June Program (6/8): Drawing the Human Figure with Hillary Hill 3

Artist Workshop Day (6/22) with Aida Birritteri & Chris Severn 3

Artist Glimpse: "Charles Spencelayh (1865–1958)" 4

Keep Arting! Your Prez -

Pamela Dulaff (p) 908-496-4315.
email: pjeden@yahoo.com

From the President's Pen

Hello Fellow Creatives !

First I want to say CONGRATULATIONS!! To the participants in this years Warren County Senior Art Show! The best works will go on to be judged in the statewide Senior Arts Show. This show is an annual part of Warren County's celebration of Older Americans Month and artwork is currently hanging in the Wayne Dumond Building in Belvidere. Warren County ARTs members (circled) include Barbara Stoffels, Susan Hammond, Shirley Spangler, Dale Hamlen, Gail Spiers, Joanne Cowley+ Julie Wane (not pictured)!!

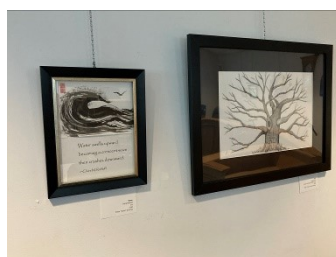
If you haven't checked out all the Fabulous artwork entered in our current Poetry & Art Collaboration exhibit in the Oxford Municipal Building—get to it before the end of June!! I was absolutely blown away by the amazing work entered and the fact that so many folks wrote their own poetry to go along with their art. This exhibit hangs until June 29th. Artwork intake for The Man & Nature exhibit starts 6/29/24.

As far as events this month:

- 1) **Monthly program on Saturday, June 8th, 1-3** in the Municipal building. **Drawing the Human Figure** with Hillary Hill. Details on page 3. Please RSVP by either phoning or emailing me (details to the left). Workshop size is limited to 25 people.
- 2) **Artist Workshop Day on Saturday, June 22, 9–4pm** in the American Legion Post 131, 122 Greenwich St., Belvidere, NJ (next to the Countrygate Theatre). Check out page 3 for details, but **registration is required by 6/17** if you plan to attend. **\$70 for members includes the full day of workshops, light breakfast, lunch and most materials.**
- 3) **Man & Nature Exhibit—Entry deadline 6/22, Artwork drop off 6/29.** Theme depicts the combination of manmade & nature. Enter online or send in the application. Free for members, \$30 for non-members to enter up to 3 pieces.



May Program Pics: Poetry with Jane Ebihara & Elaine Koplow



WCARTS Monthly Program & Exhibit Schedule 2024

Warren County ARTS Corporation- 2024 Monthly Program Schedule

Month / Date	Virtual or Live	Confirmed	Topic	Speaker	Participant fee
Saturday, 06/08/2024 1pm -3pm	Live	Yes	Drawing the Human Figure	Hillary Hill	Member- Free, Non-member- \$25
Saturday, 07/20/2024 1-4pm			PICNIC		Members only.
Saturday, 09/14/2024 1-3pm	Live	Yes	Drawing the light	Carl Ohlson	Member- Free, Non-member- \$25
Saturday, 10/12/2024 1-3pm	Live (at Bakery)	Yes	The Art of Cookie Decorating	Delightful Bakery	Member - Free, Non-member- \$25
Saturday, 11/09/2024 1-3pm	Live	Yes	Painting with Alcohol Inks	Tracey Simmonds	Member- Free, Non-member- \$25
Saturday, 12/14/2024 1-3pm	Live		Holiday PotLuck Luncheon	Members & Family	Members & family only.

Programs held Live at Oxford Municipal Bldg unless otherwise noted in table below. If program is virtual, access information

2024 Warren County ARTS Exhibition Schedule

Start	End	Exhibitor	Reception	Title/Theme	Entry Fee
6-Jan-24	9-Mar-24	Pamela Dulaff	21-Jan-24	Invitational Solo Exhibit	N/A
9-Mar-24	4-May-24	OPEN	7-Apr-24	Spring Open Show/ no theme	\$15 members, \$30 non-members for up to 3 pieces
4-May-24	29-Jun-24	members	19-May-24	Poetry & Art Collaboration	N/A
29-Jun-24	28-Sep-24	members	4-Aug-24	Man and Nature	\$15 members, \$30 non-members for up to 3 pieces
28-Sep-24	4-Jan-25	members	TBD	All forms of Water	\$15 members, \$30 non-members for up to 3 pieces

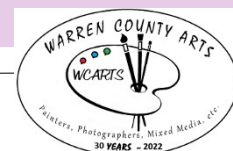


Oxford Municipal Bldg
11 Green St., Oxford NJ



Members Jean & Gordon Perry are having an exhibit at the Brodhead Creek Heritage Center in East Stroudsburg, PA. The reception is **June 9th from 2-4pm** and is hosted by the Pocono Heritage Land Trust. The exhibit is focused on nature and the watershed.

Jean's art class is having an exhibit at the Carbon County Environmental Ed Center in Summit Hill during the month of June. The artwork is by the artists that attend her nature art classes at the center. People can stop by to see the exhibit and enjoy the gallery of animals and outside walk which has live birds, such as owls & hawks. The center is located outside of Jim Thorp, PA.



Warren County ARTS, PO Box 420,
Washington, NJ 07882

About Warren County Arts

In 2022 Warren County ARTS (WCARTS) celebrated 30 years as an arts organization in Warren County NJ! After all this time we continue to be a close knit group dedicated to our mission to promote the advancement of the arts in Warren County and provide a venue for artists of all disciplines to learn with a variety of monthly programs. We welcome any adult 18+ who is an artist, wants to be an artist or appreciates the arts & just enjoys hanging out with artists! Our meetings are held once a month live or remotely. Each meeting has an exciting program to stimulate and educate. We have one judged exhibition and several non-judged shows as well as solo exhibits on display throughout the year in the Oxford Municipal Building (subject to Covid restrictions). We offer other special events to the membership which are free or low cost. WCARTS is a not

for profit 501(c)(3) organization. Funding for our programs is made possible, in part, by a grant from New Jersey State Council on the Arts, a partner agency of the National Endowment for the Arts. We encourage everyone to share their knowledge & experience with the group in the form of a workshop or lecture.

Annual Membership fees:

\$30 for single membership, \$55 for family memberships, \$25 for Seniors 75+, \$20 for students 18+ with school ID.

**"Warren County ARTS
celebrating
Since 1992"**

Donations or Sponsorships are easily accepted via our website (www.wcarts.org). Payments for annual memberships or sponsorship can be made electronically or by check made payable to WCARTS and sent to Warren County ARTS, PO Box 420, Washington, NJ 07882.

If you have information to share with the membership, please contact Pam at (home)908-496-4315, (cell) 908-581-5185 or via email pjeden@yahoo.com.

President: Pamela Dulaff (908-496-4315)
Vice Pres: Susan Hammond
Treasurer: Peggy Niece
Secretary: Doty Anderson
Member at Large: Elke Hendershot
Membership: Peggy Niece
Newsletter, Social media: Pam Dulaff
Programs: Pam Dulaff
Exhibit Chair: Peggy Niece
Publicity: Peggy Niece
Historian: Pat Olds



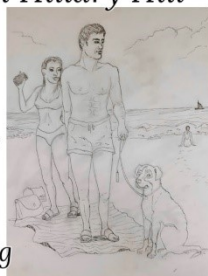
June Program: Drawing the Human Body with Hillary Hill

Warren County Arts presents:



Drawing the Human Figure

June 8, 1-3 pm
With Hillary Hill



Oxford Municipal Bldg.,
11 Green St., Oxford, NJ

\$25 for nonmembers.

Register at WCARTS.org



Made possible by funds from the
New Jersey State Council on the Arts, a partner
agency of the National Endowment for the Arts.



Saturday, June 8th, 1-3pm in the Oxford Municipal Building, 11 Green St., Oxford, NJ. Upstairs Main Meeting room.

This program is free to dues paying members of Warren County ARTs, \$25 to non-members. Members please RSVP. Non-members pre-registration is required and class size is limited to 25 students.

Information will be presented on how to correctly draw the basic human figure with classically correct proportions in a fun and accurate way. The methods shown will encourage the artist to construct the drawing, or correct a drawing, without using reference photos or live models. We will focus on the standing pose and add several "motion" positions. We will complete a final project with our methodology and materials for this will be provided.

Participants need to bring:

- 8x10 sketchbook or several sheet of drawing paper
- drawing pencil (HB or similar soft lead which is easy to erase)
- eraser
- ruler
- small paint brush

Artist Workshop Day—June 22 9am –4pm at American Legion Post 131, 122 Greenwich St., Belvidere, NJ

Warren County ARTs Artist Workshop Day 6/22/24

Full day of art workshops with breakfast &
lunch at the American Legion Post 131,
122 Greenwich St., Belvidere NJ
9am -4pm.



Explore painting with watercolor &
gouache in the morning with Aida
Birritteri.

Enjoy "happy accidents" with Oil paints in
the afternoon with Chris Severn C.R.I.



Come Create With Us!



Adults 18yrs+. Info &
Register at WCARTS.ORG
\$70 members, \$80
nonmembers.



Made possible by funds from the
New Jersey State Council on the Arts, a partner
agency of the National Endowment for the Arts.



This is an in person event open to members of Warren County ARTs and non-members alike. Workshop is limited to 30 students. Register for a full day and get ready to immerse yourself in an artful day!

The morning workshop, from 9 -12, is a water media workshop with Aida Birritteri who will be leading us in an exploration into Watercolors and Gouache paints. Supplies, for the morning workshop, that students must bring to the workshop include: A set of watercolor paints and a set of Gouache paints. A variety of sizes of brushes suitable for use with watercolors & gouache. A large white pan or plate to use for mixing colors and 11x14" pad of 140lb cold press watercolor paper. If this medium is new to you, Warren County Arts will have some paints, brushes and paper that you'll be able to use.

The afternoon workshop, from 1-4pm will be Oil Painting with Chris Severn (C.R.I) and all materials needed for this workshop are provided. Join Chris for an afternoon of creating some amazing fantasy and pop art paintings in the Bob Ross style. The paintings are fun and easy and no experience needed! Along the way you will learn about the basics of oil painting and explore the beautiful world of nature through our brushes and canvas. We will use Bob Ross's famous wet-on-wet technique to create stunning landscapes filled with trees, mountains and waterways. And the best part? There are no mistakes in painting, just happy accidents! So lets have fun, be creative, and spread joy through our paintings! By the end of our time together, you will have a beautiful master piece to take home and proudly display. Who knows, you might even discover a new passion!

Workshop fee includes both workshops, a light breakfast, lunch and most supplies. You are welcome to bring your own if you'd prefer. Please check the workshop description for details. **Pre-registration is required by 6/17/24. \$70 for members & \$80 for non-members.** Register online through our website or mail in the completed application form and check made out to WCARTS, PO Box 420, Washington, NJ 07882.

Artist Glimpse by Pamela Dulaff: “Charles Spencelayh (1865 –1958) ”

Charles Spencelayh was a British painter of figure subjects, genre scenes and portraits. I became fascinated with his work when I investigated the artist who created a sketch, that I'd inherited, of my great grandfather—Thomas Eden. See a photo of the completed painting below.

Charles was the youngest of eleven children, at 8 yrs of age he was given his first set of oil colors and was soon making copies of the old masters for art dealers selling them for 7 shillings each. Spencelayh exhibited predominantly in Britain. He showed 30 paintings at the Royal Academy from 1912 until his death in 1958. He was a founder member of the Royal Society of Miniature Painters and Vice President of the British Watercolor Society.

Spencelayh did a great deal of advertising work in his early years, it seems, advertisements for Colman's Mustard, for Goddard's Plate Powder etc. He also turned out calendars and Christmas and greeting cards. But in 1920 Spencelayh was “discovered” by one of those fairy-tale providers who most of us dream of. His patron was a Mr Levy, a cotton merchant and business man from Manchester. It started off with Mr Levy purchasing a Spencelayh painting while on holiday in Harrogate. Then after seeing another Spencelayh painting in the Royal Academy in London (which had been purchased by a noble), Mr Levy obtained Spencelayh's address to contact him about other available paintings. After buying several more, he wrote and asked Spencelayh to come see him in Manchester where Levy offered him a house, rent free and offered to double the sum of money Spencelayh was currently making! Mr Levy was delighted in his ‘discovery’ and found many fresh patrons for Spencelayh paintings, suggesting themes for his paintings and giving him a greater awareness of his potential market value as an artist. By relieving Spencelayh of immediate financial worries he helped him to evolve, elaborate, and refine at leisure his technique so effectively that henceforth any painting by him became instantly recognizable as ‘a Spencelayh’.

Charles Spencelayh's son, Charles, described his father's methods of working as spending 3 days or more considering a new picture, whether war time or just cottage life of the period. Then on the back of an envelope he would rough out the design, then in his studio he would build on frames the room, sometimes even with wall paper and hang the walls with what one would expect a cottage of that date. He had rooms full of such junk. This done he would employ one or two local people as models. The next step was to make a meticulous pencil drawing the size of the picture. He tested the accuracy of the drawing by running a ruler through the group and if the points in his drawing did not touch the ruler as in the group, something was wrong and had to be corrected. The drawing was then traced onto the canvas and painting started. Pictures took anything from 6 weeks

to six months to complete. Understandably it was heartbreaking when, in 1940, his home in Kent was bombed and he lost at least four hundred drawings created for future paintings together with many rooms filled with Victorian furniture & bric-a-brac seen in his paintings. Consider that it had taken seven moving vans to move him and his impedimenta into the place in 1937 and only three to get out what was left after the raid. It was then that he & his wife moved to Bozeat, Buckinghamshire and my great grandfather became one of his models. At no stage of his career does Spencelayh appear to have used professional models. As he told one reporter: “My old men are all amateur sitters. Usually they work— and smoke!— from 9:30 to 5pm and if I paid them some of them would gladly stay all night!

Here is the completed Spencelayh painting in which Thomas Eden, my great grandfather was the model.

