

MAILING ADDRESS: Warren County ARTS, PO Box 420, Washington, NJ 07882

# ~ The Artist's Palette ~

Volume 24, Issue 6

June 2020



## Inside this issue:

From the President's Pen	1
Program & Exhibit Schedule	2
Treasurer's Report	2
June Program Hi-Lites	2
@Warren County ARTS	3
Artist Glances by Jean Perry "Madame X"	3
Artwork Hi Tech Scan & Quarantine Art	4

## Special points of interest:

*Monthly program for June will be held in the Municipal bldg parking lot 5:30pm.*



## From the President's Pen

Hello Everyone!

I hope you are all well and not too traumatized by the quarantine lock down. I have to admit that I've actually been enjoying it. Nothing but time to read, watch YouTube tutorials and practice drawing and painting! Of course my little dog, Coco, has been thrilled to have both Paul & me here for constant attention.

I'm really excited to tell you that due to lifted restrictions, we WILL hold the June program with Samantha Matthews on Thursday 6/11. We'll be outside in the Municipal building parking lot. **CHANGES: The program will be held from 5:30 - 7:30pm, everyone must wear a face mask, maintain social distancing and BYO snack & drink.**

Jean's artist glimpse article this month about the Madame X painting by John Singer Sargent was so interesting I looked up some additional information. Did you know he sold the portrait to

The Met in 1916 for £1,000 (\$4,770) or about \$106,000 today. FYI - A car in 1916 cost \$360. And this painting is HUGE! **Dimensions:** 7' 8" x 3' 7".

WOO HOO!!! We received our first donation from Smile.Amazon.com on June 1st! It wasn't much but exciting that folks are taking advantage of the offer. Keep up the good work!!

Belvidere Through the Window Art Competition. Open to all Belvidere residents. Acrylic, Oil, watercolor or photography on the theme of "Belvidere - through the window". Submissions accepted until 6/5 at 205 Hardwick St or 311 Mill St. Call Amy at 484-682-3152 or email: belvidereheritage@gmail.com for an entry form.

Your Prez - Pamela Dulaff

Call me at 908-581-5185 if you'd like to chat.



## Daily Fare

The meeting this month **Thursday June 11th 5:30 - 7:30pm.**

The 2020 membership year & dues collection starts in March (extended to May 2nd this year). Please note new fee structure below:

\$30/yr for single membership, \$55/yr for family memberships, \$25/yr for Seniors 75+, \$20/yr for students 18+ with school ID.

Donations or Sponsorships are easily accepted via our website ([www.wcarts.org](http://www.wcarts.org)). Payments for annual memberships or sponsorship can be made electronically via PayPal or by check made payable to WCARTS and sent to Warren County ARTS, PO Box 420, Washington, NJ 07882. Make all your Amazon purchases through Smile.Amazon.com and select Warren County ARTS Corporation as your charity and we'll receive 0.5% of every eligible purchase! No extra cost or effort to you! :)

If you have information to share with the membership, please contact Pam at 908-581-5185 or via email [pjeden@yahoo.com](mailto:pjeden@yahoo.com).



## WCARTS Monthly Program Schedule 2020

Held at Oxford Municipal Bldg unless otherwise noted.

### Warren County ARTS Corporation- 2020 Monthly Program Schedule

Month / Date	Confirmed	Topic	Speaker	web	Participant fee
6/11/2020 (Thu, 5:30-7:30 pm)	Yes	Art Journaling Workshop	Samantha Matthews (Art Across Borders)	<a href="http://artacrossborders.com">artacrossborders.com</a>	Members only - Free
7/11/2020 Aug	Date TBC	Picnic Summer Break	Peggy Niece House- Oxford NJ		N/A N/A
9/10/2020 (Thu, 7-9pm)	TBC	Eagle Photography- Lecture	Bob Behrent		Free
10/10/2020 (Sat, 1-3pm)	Yes	Sculpture with Sculpy Workshop	Hillary Hill		\$10/person for sculpy
11/14/2020 (Sat, 1-3pm)	Yes	India Ink & Watercolor workshop	Toni Chaplin		Member- \$10, Non-member- \$25
12/12/2020 (Sat, 1-3pm)		Holiday Lunch/Dinner			Members & Family only

### Treasurer's Report



May 2020

Balance: \$2939.25



### 2020 Warren County ARTS Exhibition Schedule

Start	End	Reception	Title/Theme	Entry Fee
14-Mar-20	29-Mar-20	29-Mar-20	Fur, Feathers & More	Members - Free, nonmembers- \$15
2-May-20	18-May-20	18-May-20	Spring Open Art Exhibit	Members- \$15, nonmembers- \$25
18-Jul-20	5-Sep-20	24-Aug-20	TBD	
5-Sep-20	24-Oct-20	24-Oct-20	TBD	
24-Oct-20	5-Dec-20	8-Nov-20	TBD	
5-Dec-20	30-Jan-21	30-Jan-21	Annual Winter Art Exhibit	

### June Program - Art Journaling with Samantha Matthews - Art Across Borders



Samantha Matthews is the creative powerhouse behind Art Across Borders. She has a BA in Fine Art from Gordon College. After traveling over four years to four countries, Sam found that the time spent in these countries fostered her love for the textures, colors, homes and souls of each culture. Using FLO, her mobile art studio, Sam is able to get out into the community right to people's homes and watch as they cross borders within themselves through art making.

We are thrilled to have Sam present a program about Art Journaling to Warren County ARTS members only on June 11th. Have you heard about exploring the creative possibilities of art journaling? Now is your chance to learn about it! In this 2 hour workshop you will learn all about the

world of art journaling and make a few pages yourself. Artist Sam Matthews will share her experience and love of art journaling in a short lecture then share her lessons on how to play with your own journals. Many materials will be provided but please feel free to bring the following: Journal or sketchbook (if you do not have one, some paper will be provided to you), Magazines (to cut up), scrapbook paper, stamps/ink pads, Photos or photocopies, Favorite markers, watercolors, etc. Paid up Members only, Face Masks must be worn, social distancing, BYO snack & drink. The meeting will be held at 5:30 pm, Thursday, June 11th in the parking lot of the Oxford Township Municipal Building, 11 Green St., Oxford, NJ. Funding for our programs is made possible, in part, by a grant from Warren County Cultural & Heritage Division of Land Preservation.





## Artist Glimpse: John Singer Sargent

### Artist Glimpse by Jean M. Perry: "Madame X"

John Singer Sargent (1856-1925) was born in Florence to American expatriate parents who wanted to enjoy the European culture refinement and arts. By age 18, JSS was already a serious art student, studying in France at the studio of Carolus Duran (a Velazquez fan) and at the Ecole des Beaux Arts. Sargent became a prolific portrait artist at a young age when he met his demise with the famous painting that became known as Madam X.

Mrs. (Virginie Amelie Avegno) Pierre Gautreau was from New Orleans. After the Civil War, her mother decided to move her daughters to Paris where they could find rich husbands. Amelie married a banker 20 years older. In France, this gave her freedom to flirt, have affairs, shop and socialize in the new malls, enjoy! Infatuated with her, Sargent wanted desperately to paint her portrait,

a challenge as she was spoiled and yet provocative. His creation was dynamic, one of elegance, with sharp contrasts of a brown background, no jewelry and a simple black gown, one made for an evening out. Unfortunately, while posing, Amelie's strap fell off her shoulder. And although the family liked the portrait when Sargent entered it into the much sought after French 1884 Salon, they quickly changed their minds after the French caused a major storm over it. How dare Amelie be posed and he paint her as if ready for sex. Jealousy arose over the talented America painter and beautiful American woman! They weren't French! How dare they make it appear that they were!! The Gautreaus wanted the painting removed. Monsieur Gautreau confronted Sargent with friends and eventually Sargent left for England. The painting stood in his studio for years. He once admitted to Monet that he felt it his best work. Amelie died in 1915. In 1916, Sargent sold the painting for a pittance to the Metropolitan Museum of Art with the stipulation that the sitter's name not be known for 30 years. Hence the name, Madame X.



Photograph of  
Madame Gautreau, 1884  
THE METROPOLITAN MUSEUM OF ART,  
NEW YORK



John Singer Sargent, Madame X  
(Madame Pierre Gautreau), 1883-1884  
THE METROPOLITAN MUSEUM OF ART,  
NEW YORK



**MAILING ADDRESS:** Warren County ARTS, PO  
Box 420, Washington, NJ 07882

## About Warren County Arts

Website: [www.wcarts.org](http://www.wcarts.org)  
Facebook: @wcarts- warren county arts  
corporation

In 2017 Warren County ARTS (WCARTS) celebrated 25 years as an arts organization in Warren County NJ! After all this time we continue to be a close knit group dedicated to our mission to promote the advancement of the arts in Warren County and provide a venue for artists of all disciplines to learn with a variety of monthly programs. We welcome anyone who is an artist, wants to be an artist or appreciates the arts & just

enjoys hanging out with artists! Our meetings are held once a

month at the Oxford Municipal Building in Oxford, NJ. Each meeting has an exciting program to stimulate and educate. We have one judged exhibition, several non-juried shows as well as solo exhibits on display throughout the year in the Oxford Municipal Building. We offer special day trips & other

**"Warren County ARTS  
celebrated 25 years in  
2017"**

events to the membership which are free or low cost. WCARTS is a not for profit 501(c)3 organization. Funding for our programs is made possible, in part, by a grant from Warren County Cultural & Heritage Division of Land Preservation. We encourage everyone to share their knowledge & experience with the

President: Pamela Dulaff  
Vice Pres: Hillary Hill  
Treasurer: Peggy Niece  
Secretary: Carol Zielinski  
Member at Large I: Brian Daum  
Member at Large II: Rosemary Barcellona  
Membership: Peggy Niece  
Newsletter, Social: Pam Dulaff  
Programs & Day Trips: Pam Dulaff  
Exhibit Chair: Brian Daum  
Hospitality: Open  
Publicity: Rosemary Barcellona



## 'Girl with a Pearl Earring' gets a hi-tech scan

Thanks to Carol Southerland for sending me this article for the newsletter!

Girl with a Pearl Earring - is an oil painting by Dutch Golden Age painter Johannes Vermeer, dated c. 1665. It became known by its present title towards the end of the 20th century after the large pearl earring worn by the girl portrayed. A team of researchers working with the Mauritshuis Museum in the Hague reviewed the results of their two year examination of this painting using a variety of imaging techniques.

The researchers mapped the painting's pigments using modern imaging techniques. Additionally, they tested tiny fragments of paint removed from the artwork's background in the 1990s, when it was last restored. The samples were embedded in resin and sliced in half to reveal the layers inside, yielding a mix of yellow and indigo pigments that had degraded in the light over time. Modern imaging also revealed the presence of faint, diagonal lines of lead white in the painting's upper right corner. Together, the results show that when Vermeer first painted the *Girl With a Pearl Earring*, a dark green curtain was draped in its background.

Vermeer's eponymous girl wears a fashionable gold jacket, a blue-and-gold

head scarf, and a large pearl earring. The scarf stood out to researchers analyzing the pigments



used by the Dutch Golden Age giant. The vibrant blue was derived from the semi-precious stone lapis lazuli, which was heated and ground up to produce a pigment.

It's surprising how much high quality ultramarine Vermeer used in the girl's headscarf, this blue pigment was more valuable than gold in the 17th century.

Blue wasn't the only *Girl With a Pearl Earring* hue used that originated further afield. While the painting's yellow and brown pigments could have been mined in Europe, the red used in the figure's lips came from insects that lived on cacti in Mexico and South America. The white that highlights her eyes and earring was made from lead mined in England, and the dark blue in the background came from either Asian or North American indigo. Thanks to global trade, the

pigments were likely all available for purchase in Vermeer's hometown of Delft.

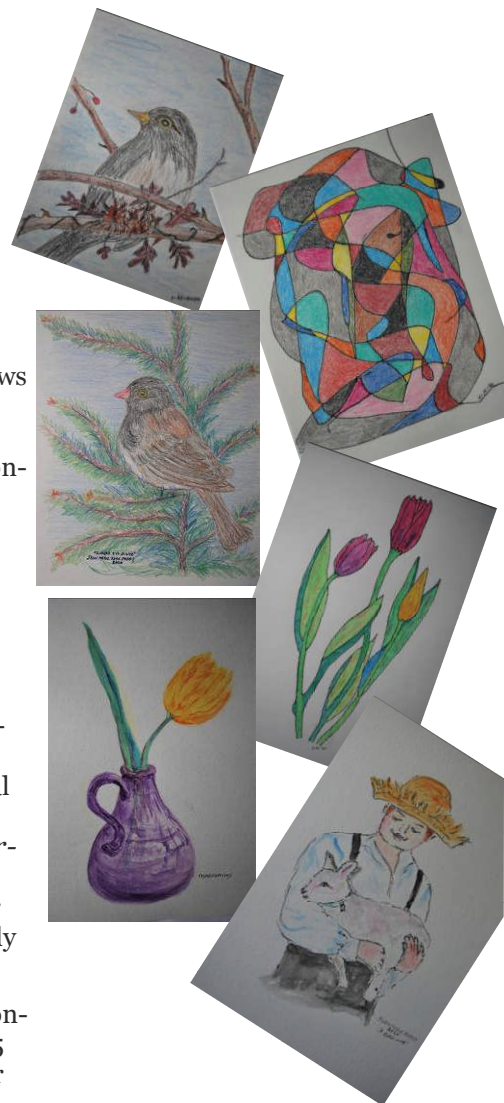
"We were able to find out so much about Vermeer's materials and techniques, but we still don't know exactly who the girl is. It is good that some mysteries remain and everyone can speculate about her. It allows people their own personal interpretation of the girl; everyone feels their own connection with the way she meets your eyes."

The artwork, completed around 1665, is one of Vermeer's best-known works. Many of the 17th-century artist's paintings center on women engaging in quotidian tasks such as reading, writing and playing musical instruments. In contrast, *Girl With a Pearl Earring* features an unnamed young woman looking over her shoulder to gaze directly at the viewer.

While it may seem like a conventional portrait, the 1665 work is actually a *tronie*, or painting that emphasizes character and costume over the depiction of a specific subject.

"The *tronie* furnished the artist with an opportunity to demonstrate his ability in rendering fine stuffs, an exotic garment or characteristic facial type."

## Quarantine Art by Jean & Gordon Perry



Pam Dulaff Quarantine Art

